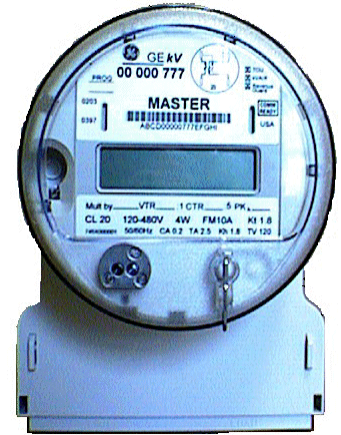


Designed for Upgradability

The kV™ A-Base Meter has been designed with easy upgrading in mind. Some of the features that make upgrading easy are:

- Ready for up to three options boards and Revenue Guard Board
- Uses standard kV option boards and Soft Switches
- All A-Base meters have KYZ-1 connections in the terminal block
- All A-Base meters are pre-wired for option boards with a KYZ connector ready to snap onto an I/O option board.
- Knock out on right side for I/O cable
- Knock out on left side for telephone cable
- Cables have grommets that lock into knock out holes

With designed in provisions for option boards, cables and Soft Switches, the kV A-Base meter is ready to be upgraded.



kV A-Base Meter

Additional kV A-Base Features

- Both Transformer Rated (TR) and Self Contained (SC) versions
- 150A load current capability, the highest available in an electronic A-Base meter
- New optional 57 to 120V wide range power supply for special applications
- $\pm 0.2\%$ accuracy at standard test points for energy and demand (typical)
- Meets ANSI C12.20 class 0.5 accuracy
- New Form 48A makes KYZ wiring easier than 10A



Knock-out for telephone cable

plus ... All the standard kV Features

- Fitzall™ Application Flexibility
- Site Genie installation check and continuous site monitoring
- Revenue Guard Protection Option and DC Immunity
- Power Quality and Cost of Service Measurements
- Software selectable 50 or 60 Hz. operation
- Standard Reading and Programming (ANSI C12.18 and C12.19)
- Inventory reduction with 120 to 480 V operation and consolidated forms

Circuit	Wires	Form	Elements	Class	CatNo	Replaces
<i>Self Contained 120 - 480 V</i>						
Singlephase	3	13A	2	150	745X300001	12A but has wider terminal block
3 ϕ Δ	3					
Network or 2 ϕ	3					
3 ϕ Y or Δ	4	16A \boxtimes	3	150	745X400001	14A and 15A
<i>Transformer Rated 120 - 480 V</i>						
3 ϕ Y or Δ	4	10A \boxtimes \blacklozenge	3	20	745X000001	8A, 9A & 11A
3 ϕ Y	4	36A	2½	20	745X600001	6A, 46A
3 ϕ Δ	3 or 4	45A	2	20	745X500001	5A
2 ϕ	5					
3 ϕ Y or Δ	4	48A \boxtimes \blacklozenge	3	20	745X800001	8A, 9A and 11A

\boxtimes Fitzall Meter

\blacklozenge 10A and 48A are the same except KYZ terminal location



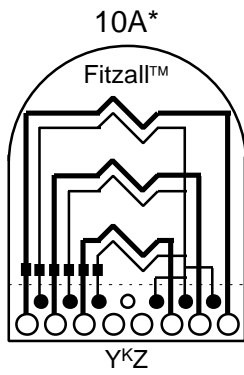
GE Power Delivery
130 Main Street
Somersworth, NH 03878



A-Base Meters



ANSI C12.10 Internal Connections



kV Packaging Information		
Pack Size (W X DX H)		
Single Pack	12 ½ X 8 ½ X 10 ½	
4 Pack	23 ¾ X 19 ¾ X 11 ¾	
Weight (Aprox.)	TR	SC
Meter only	4.0 lbs. (10A)	5.1 lbs. (16A)
Single Pack	5.1 lbs. (10A)	5.6 lbs. (16A)
4 Pack	20.4 lbs. (10A)	24.8 lbs. (16A)

