



# Indoor Current Transformer

Model JAR-0C – 600V

Auxiliary Current Transformer



**APPLICATION**

Designed for indoor service; for connection in the secondary circuit of a main current transformer to change the effective ratio seen by meters and relays. Its accuracy is suitable for use with totalizing meters and relays. It is designed for use on circuits not exceeding 600V to ground.

**REGULATORY AGENCY APPROVALS**

UL Recognized .....File E93779

**WEIGHT (approximate)**

Transformer .....10 lbs

**REFERENCE DRAWINGS**

Outlines .....0121C33696

**INSULATION LEVEL**

Because it is used in the secondary circuit of another transformer, it has no voltage rating. These transformers receive a 60Hz, 2.5 kV high potential factory test between each winding and between the windings and ground

**FREQUENCY**

50-60 Hz

JAR-0C DATA TABLE					
Continuous Thermal Current Rating Factor 1.5 at 30° C Ambient – 1.1 at 55° C Ambient					
ANSI Meter Accuracy Classification, 60 Hz All Models 0.3 at B-0.1 and B-0.2					
Current Ratio (in Amps) Pri:Sec ϕ	Internal Burden (Short-Circuit Impedance) VA at Rated Current	Catalog Number	Current Ratio (in Amps) Pri:Sec ϕ	Internal Burden (Short-Circuit Impedance) VA at Rated Current	Catalog Number
5:0.100	6.0	750X101126	5:6.250	ψ	750X101369
5:0.200	5.7	750X101120	5:7.500	7.3	750X101010
5:0.250	6.8	750X101118	5:8.000	7.7	750X101009
5:0.500	7.0	750X101106	5:10.000	8.5	750X101003
5:0.625	7.2	750X101101	5:12.500	8.9	750X101002
5:1.000	7.8	750X101088	5:15.000	10.7	750X101001
5:1.250	7.8	750X101082	1.000:5	6.8	750X101029
5:1.667	7.8	750X101067	1.667:5	9.0	750X101026
5:2.000	7.8	750X101060	2.500:5	8.2	750X101024
5:2.395	7.8	750X101056	2.875:5	7.0	750X101330
5:2.500	7.3	750X101054	7.500:5	9.1	750X101019
5:2.890	7.1	750X101051	10.000:5	8.5	750X101015
5:3.000	7.8	750X101049	0.500:1	ψ	750X101308
5:3.330	7.5	750X101042	0.923:1	ψ	750X101335
5:3.750	8.0	750X101038	4.000:10	8.3	750X101004
5:4.000	8.5	750X101036	5&5:5 ‡	8.2	750X101133
5:5.000	8.5	750X101020	5&5&5&5:5 ‡	8.2	750X101131
5:5.330	8.5	750X101309	5&5&5&5&5:5 ‡	8.2	750X101129

ψ Refer to factory

ϕ Common ratios are listed in the data table; other ratios are available, consult factory.

‡ Up to six secondary currents can be totalized. Equal or unequal line current transformers can be summed with these transformers. Consult factory with the ratios of the line current transformers to be totalized

### Construction and Insulation

The core and coils are enclosed in a molded case and encapsulated in polyurethane resin. The case is molded with GE Valox® thermoplastic polyester resin. This tough material has excellent electrical and mechanical properties over a wide temperature range and is resistant to oil and a variety of chemicals.

### Core

The core is made from high quality grain oriented silicon steel, annealed under rigidly controlled factory conditions.

### Coils

The primary and secondary windings are made of heavy enameled copper wire evenly distributed around the core for maximum accuracy.

### Terminals

Both primary and secondary terminals are 10-32 binding head screws, located on the top of the transformer. Primary and secondary terminals are at opposite sides of the case.

### Polarity

Primary and secondary polarity terminals are identified with molded characters on top of the transformer case. Multiple secondary windings are marked 1H1, 2H1, etc.

### Nameplates

The nameplate is made of polyester material and is attached to the side of the case.

### Base plate and Mounting

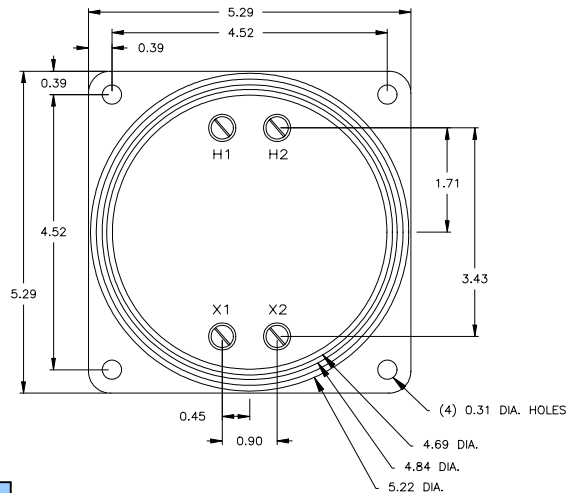
The base plate is made from plated steel. The transformer may be mounted by its base plate in any desired position.

### Maintenance

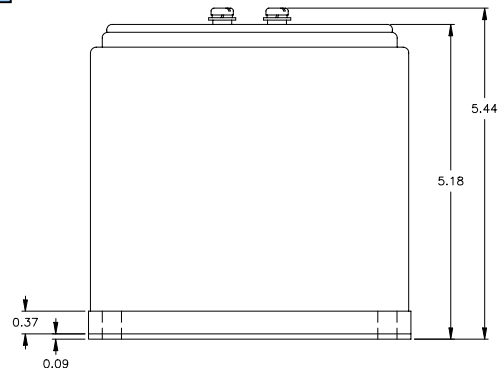
These transformers require no maintenance, other than occasional cleaning if installed where air contamination is severe.

*Data subject to change without notice*

To purchase or obtain more information about GE Instrument Transformer products, please call GE's Charlotte Service Center at 1-800-431-7867. Product information is also available on our web site at <http://www.GEIndustrial.com>. Click on the Product Index button (right column), select Transformers and follow the menus to **Product Information** or a **Solutions Advisor**.



**JAR-0C Dimensions**



130 Main Street  
Somersworth, NH 03878

1907 Calumet Street  
Clearwater, FL 33765

**GE Industrial Systems**