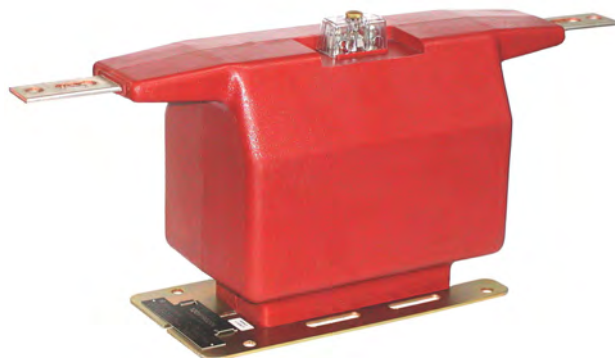




Indoor Current Transformer, Wound Primary Model JKM-5C – 15kV, 110kV BIL, 5A – 800A



APPLICATION
Designed for indoor service. Suitable for operating meters, relays and control devices.

WEIGHT
(approximate) 53 lbs

REFERENCE DRAWINGS
Outline 0162C34108

INSULATION LEVEL
15.5kV; BIL 110kV full wave.

FREQUENCY
50-60 Hz

JKM-5C DATA TABLE

Current Ratio (in Amps) Pri:Sec	ANSI Accuracy Classification, 60 Hz		Relay Class	Continuous Thermal Current Rating Factor		Primary Bar Size		Mech. Limit Amps	One Second Thermal Limit, Amperes	Catalog Number
	ANSI Meter Class Burden			30°C Ambient	55°C Ambient	Width ins.	Thick ins.			
	B-0.1 to B-0.5	B-0.9 B-1.8								
Single Ratio										
5:5	0.3	0.3	T200	1.5	1.33	1.5	0.188	625	465	755X142001
10:5	0.3	0.3	T200	1.5	1.33	1.5	0.188	1,250	930	755X142002
15:5	0.3	0.3	T200	1.5	1.33	1.5	0.188	1,875	1,470	755X142003
20:5	0.3	0.3	T200	1.5	1.33	1.5	0.188	2,500	1,850	755X142004
25:5	0.3	0.3	T200	1.5	1.33	1.5	0.188	3,125	2,300	755X142005
30:5	0.3	0.3	T200	1.5	1.33	1.5	0.188	3,750	2,460	755X142006
40:5	0.3	0.3	T200	1.5	1.33	1.5	0.188	5,000	3,720	755X142007
50:5	0.3	0.3	T200	1.5	1.33	1.5	0.188	6,250	4,600	755X142008
75:5	0.3	0.3	T200	1.5	1.33	1.5	0.188	9,375	6,375	755X142009
100:5	0.3	0.3	T200	1.5	1.33	1.5	0.188	12,500	8,600	755X142010
150:5	0.3	0.3	T200	1.5	1.33	1.5	0.188	18,750	12,750	755X142011
200:5	0.3	0.3	T200	1.5	1.33	2.0	0.25	25,000	17,200	755X142012
300:5	0.3	0.3	T200	1.5	1.33	2.0	0.25	37,500	25,800	755X142014
400:5	0.3	0.3	T200	1.5	1.33	2.0	0.25	50,000	36,000	755X142015
500:5	0.3	0.3	T200	1.5	1.33	2.0	0.38	53,500	42,000	755X142016
600:5	0.3	0.3	T200	1.5	1.33	2.0	0.38	75,000	51,600	755X142017
800:5	0.3	0.3	T200	1.2	0.85	2.0	0.38	80,000	63,200	755X142018
Tapped-Secondary										
50/100:5	0.3	---	T100	2.0	1.5	1.5	0.188	12,500	4,300	755X142039
	0.3	0.3	T200	1.5	1.0				8,600	
75/150:5	0.3	---	T100	2.0	1.5	1.5	0.188	18,750	6,375	755X142040
	0.3	0.3	T200	1.5	1.0				12,750	
100/200:5	0.3	---	T100	2.0	1.5	2.0	0.25	25,000	8,600	755X142041
	0.3	0.3	T200	1.5	1.0				17,200	
150/300:5	0.3	---	T100	2.0	1.5	2.0	0.25	37,500	12,900	755X142042
	0.3	0.3	T200	1.5	1.0				25,800	
200/400:5	0.3	---	T100	2.0	1.5	2.0	0.25	50,000	18,000	755X142043
	0.3	0.3	T200	1.5	1.0				36,000	
300/600:5	0.3	---	T100	2.0	1.5	2.0	0.38	75,000	25,800	755X142044
	0.3	0.3	T200	1.5	1.0				51,600	
400/800:5	0.3	---	T100	2.0	1.5	2.0	0.38	80,000	31,600	755X142045
	0.3	0.3	T200	1.2	0.85				63,200	

Construction and Insulation

The core and coil assembly is encapsulated in vacuum cast polyurethane resin. This material has excellent electrical and mechanical properties over a wide temperature range, has very low water absorption and is resistant to oil and a variety of chemicals.

Core and Coils

The core is made from high quality grain oriented silicon steel, annealed under rigidly controlled factory conditions. The primary winding consists of two coils in series, one around each leg of the core. This construction minimizes flux leakage thus improving the accuracy of the transformer.

The secondary winding consists of two coils in parallel. Each coil is located inside the corresponding primary coil and surrounds one leg of the core.

Terminals

Secondary terminals are tin-plated brass, compression type with a 0.275" diameter cross-hole for wiring and a ¼-28 clamp screw. A shorting device is provided and interlocked with the terminal cover in such a way as to prevent connection error. The terminal cover is made of a clear plastic. Provision is made for sealing the cover.

Primary Bars

The primary terminals are tin plated copper bars cast into the resin insulation. They have one hole and one slot at each end, suitable for ½" bolts.

Polarity

The primary and secondary polarity markers H1, X1, are marked with white paint for easy identification.

Nameplate

The nameplate is laser engraved aluminum.

Baseplate and Mounting

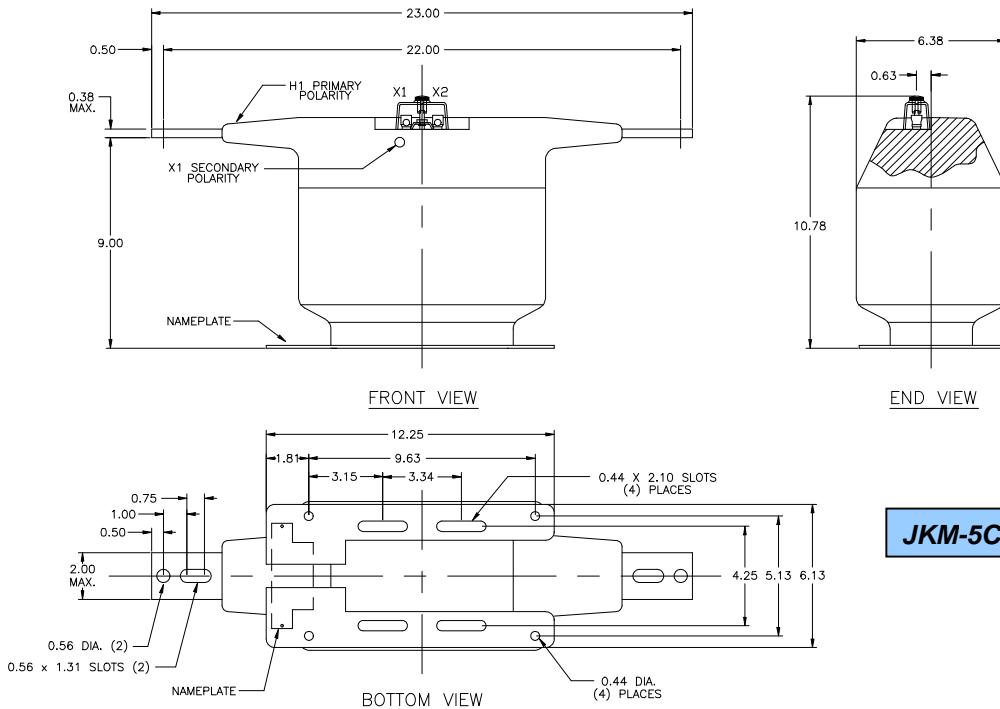
The baseplate is made of heavy steel with a zinc-chromate plated finish, it is provided with four slots for mounting. The transformer may be mounted in any orientation.

Maintenance

These transformers require no maintenance, other than occasional cleaning if installed where air contamination is severe.

Data subject to change without notice

To purchase or obtain more information about GE Instrument Transformer products, please call GE's Charlotte Service Center at 1-800-431-7867. Product information is also available on our web site at <http://www.GEIndustrial.com>. Click on the Product Index button (right column), select Transformers and follow the menus to **Product Information** or a **Solutions Advisor**.



JKM-5C Dimensions

