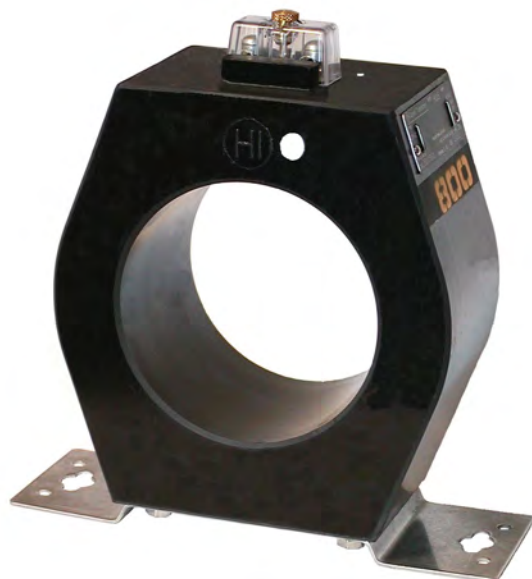




# Indoor/Outdoor Current Transformer

## Model JCP-0C – 600V, 10kV BIL, 100 – 4000A

### Window Diameter 5.38"



#### APPLICATION

Designed for both indoor and outdoor service. Suitable for operating meters relays and control devices, on circuits not exceeding 600V line-to-line. It may be used on higher voltage circuits with an insulated conductor; refer to the Applications Information section of catalog GEP-9186.

#### REGULATORY AGENCY APPROVALS

UL Recognized ..... File E93779

#### WEIGHT

(approximate)  
Transformer with baseplate ..... 28 lbs

#### REFERENCE DRAWINGS

Outline: Single Ratio ..... 0121C34439  
Dual Ratio ..... 0121C33763

#### INSULATION LEVEL

0.6kV; BIL 10kV full wave.

#### FREQUENCY

50-60 Hz

**JCP-0C DATA TABLE**

Current Ratio (in Amps) Pri:Sec	ANSI Accuracy Class, 60 Hz				Continuous Thermal-Current Rating Factor @ 30°C Ambient	Catalog Number
	B-0.1 to B-0.5	B-0.9	B-1.8	Relay Class		
<b>Single Ratio</b>						
600:5	0.3	0.3	0.3	C100	2.0	750X115002
800:5	0.3	0.3	0.3	C100	2.0	750X115003
1200:5	0.3	0.3	0.3	C200	2.0	750X115005
1500:5	0.3	0.3	0.3	C200	2.0	750X115006
2000:5	0.3	0.3	0.3	C200	1.5	750X115007
3000:5	0.3	0.3	0.3	C200	1.33	750X115009
4000:5	0.3	0.3	0.3	C200	1.33	750X115010
<b>Dual Ratio</b>						
1000/2000:5	0.3	0.6	0.6	C100	2.0	750X115011
	0.3	0.3	0.3	C200	1.5	
1500/3000:5	0.3	0.3	0.6	C100	2.0	750X115012
	0.3	0.3	0.3	C200	1.33	
2000/4000:5	0.3	0.3	0.6	C100	1.5	750X115013

### Conduit Attachment

A secondary conduit box, is available only for single ratio transformers. It is suitable for outdoor applications. Box and cover are made of aluminum with a black finish. The cover has a gasket and four sealable thumb-screws. The part number for the complete assembly, including cover, thumb-screws and gaskets is 9689693011.

### Primary Conductor

A bus or insulated cable forms the primary winding.

### Nameplates

The nameplate is laser engraved aluminum. It is attached to the top of the unit and has provision for attaching the user's identifying tag. The

nominal current rating is marked on the side of the unit in large numerals.

### Baseplate and Mounting

The transformer can be mounted in any position. The base plate is made of heavy stainless steel plate. It is attached to the transformer with four bolts and has two keyhole slots allowing installation of the mounting bolts before placing the transformer.

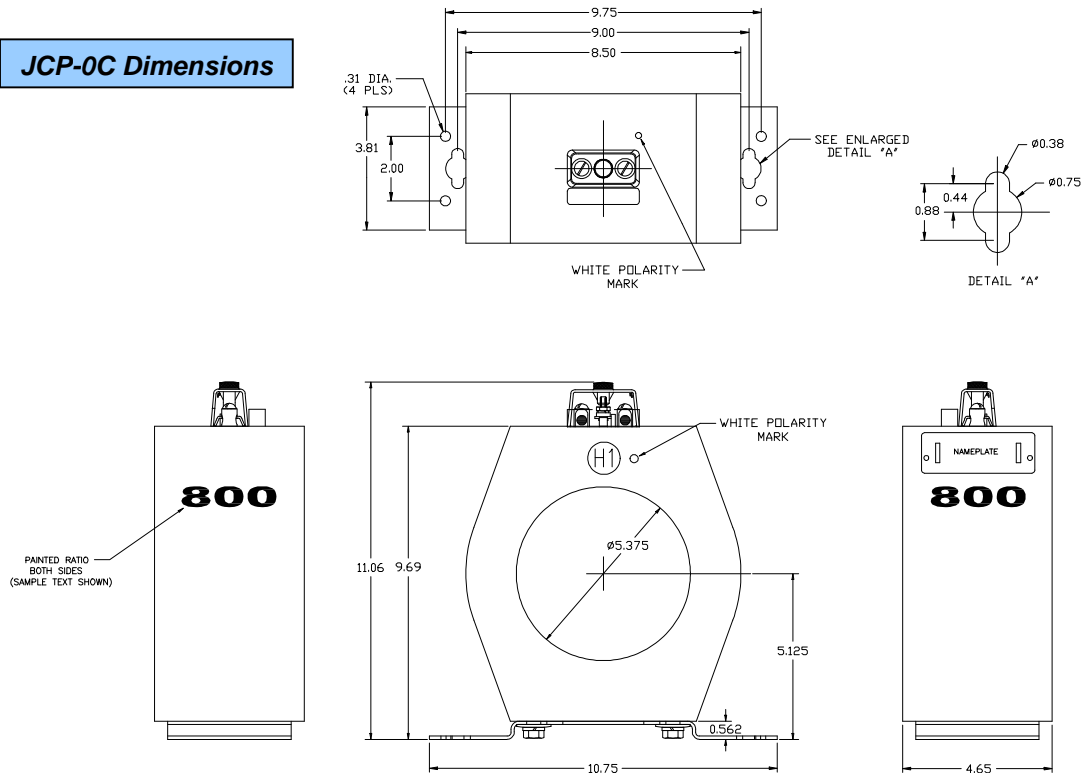
### Maintenance

These transformers require no maintenance, other than occasional cleaning if installed where air contamination is severe.

*Data subject to change without notice*

To purchase or obtain more information about GE Instrument Transformer products, please call GE's Charlotte Service Center at 1-800-431-7867. Product information is also available on our web site at <http://www.GEIndustrial.com>. Click on the Product Index button (right column), select Transformers and follow the menus to **Product Information** or a **Solutions Advisor**.

### JCP-0C Dimensions



130 Main Street  
Somersworth, NH 03878

1907 Calumet Street  
Clearwater, FL 33765

**GE Industrial Systems**