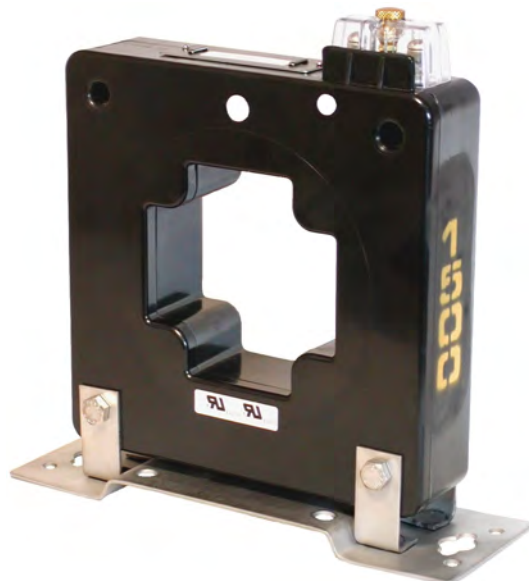




Indoor/Outdoor Current Transformer

Model JAD-0C – 600V, 10kV BIL, 200 – 4000A

Cross Shaped Window



APPLICATION
 Designed for both indoor and outdoor service. Suitable for operating meters, instruments and control devices. For use on higher voltage circuits with an insulated primary conductor, refer to the Applications Information section of catalog GEP-9186.

REGULATORY AGENCY APPROVALS
 UL RecognizedFile E93779

WEIGHT
 (approximate)
 Transformer, Window Type 13 lbs
 Mounting Base, add 2 lbs

REFERENCE DRAWINGS
 Outline 0121C35734

INSULATION LEVEL
 0.6kV; BIL 10kV full wave.

FREQUENCY
 50-60 Hz

JAD-0C DATA TABLE								
Current Ratio (in Amps) Pri:Sec	ANSI Accuracy Classification, 60 Hz					Continuous Thermal Current Rating Factor 30°C Ambient	Continuous Thermal Current Rating Factor 55°C Ambient	Catalog Number
	ANSI Burdens							
	B-0.1	B-0.2	B-0.5	B-0.9	B-1.8			
Single Ratio								
800:5	0.3	0.3	0.3	---	---	2.0	1.5	750X120009
1000:5	0.3	0.3	0.3	0.3	---	2.0	1.5	750X120010
1200:5	0.3	0.3	0.3	0.3	---	2.0	1.5	750X120011
1500:5	0.3	0.3	0.3	0.3	---	3.0	2.0	750X120183
2000:5	0.3	0.3	0.3	0.3	0.3	2.0	1.5	750X120013
2500:5	0.3	0.3	0.3	0.3	0.3	1.5	1.0	750X120014
3000:5	0.3	0.3	0.3	0.3	0.3	1.5	1.0	750X120015
4000:5	0.3	0.3	0.3	0.3	0.3	1.5	1.0	750X120016
Dual Ratio								
600/1200:5	0.3	0.3	---	---	---	2.0	1.5	750X120030
	0.3	0.3	0.3	---	---	2.0	1.5	
800/1600:5	0.3	0.3	---	---	---	2.0	1.5	750X120031
	0.3	0.3	0.3	---	---	2.0	1.5	
1000/2000:5	0.3	0.3	0.3	---	---	2.0	1.5	750X120032
	0.3	0.3	0.3	0.3	0.3	1.5	1.0	
1500/3000:5	0.3	0.3	0.3	---	---	2.0	1.5	750X120033
	0.3	0.3	0.3	0.3	0.3	1.5	1.0	
2000/4000:5	0.3	0.3	0.3	---	---	2.0	1.5	750X120034
	0.3	0.3	0.3	0.3	0.3	1.5	1.0	

Construction and Insulation

The core and coil assembly is encapsulated in resin within a molded case. The case is molded with GE Valox® thermoplastic polyester resin. This tough material has excellent electrical and mechanical properties over a wide temperature range, has low water absorption and is resistant to oil and a variety of chemicals. The polyurethane resin filling completely encapsulates the winding, leads and terminals to form a waterproof unit.

Core and Coils

The core is made from high quality grain oriented silicon steel, annealed under rigidly controlled factory conditions. The secondary winding is made of heavy enameled copper wire. The secondary windings are evenly distributed around the core for maximum accuracy and resistance to stray fields from adjacent conductors.

Terminals

Secondary terminals are tin-plated brass, compression type with a 0.275" diameter cross-hole for wiring and a ¼-28 clamp screw. A shorting device is provided and interlocked to the terminal cover. The terminal cover is made of a clear plastic. Provision is made for sealing the cover

Conduit Attachment

A secondary conduit box, in place of the secondary terminal block, is available. It is suitable for outdoor applications. Box and cover are made of aluminum with a black finish. The cover has a gasket and four sealable thumb-screws. Two boxes are required for dual ratio transformers.

Polarity

Primary and secondary polarity marks H1 and X1 are molded into the case.

Nameplates

The nameplate is laser engraved aluminum. It is attached to the top of the unit and has provision for attaching the user's identifying tag. The nominal current rating is marked on the side of the unit in large numerals.

Baseplate and Mounting

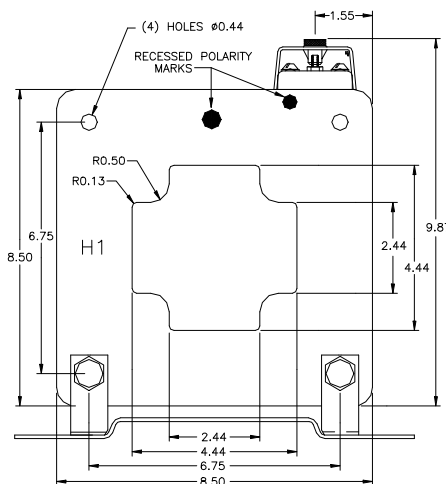
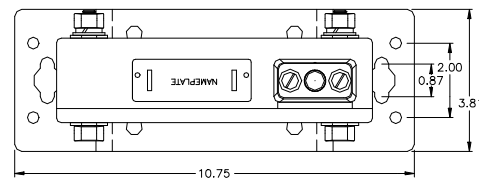
The transformer can be mounted in any position. An optional base plate is available, made of heavy steel plate. It is attached to the transformer with two bolts.

Maintenance

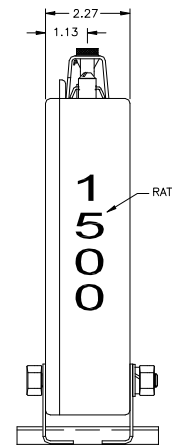
These transformers require no maintenance, other than occasional cleaning if installed where air contamination is severe.

Data subject to change without notice

To purchase or obtain more information about GE Instrument Transformer products, please call GE's Charlotte Service Center at 1-800-431-7867. Product information is also available on our web site at <http://www.GEIndustrial.com>. Click on the Product Index button (right column), select Transformers and follow the menus to **Product Information** or a **Solutions Advisor**.



JAD-0C Dimensions



130 Main Street
Somersworth, NH 03878

1907 Calumet Street
Clearwater, FL 33765

GE Industrial Systems